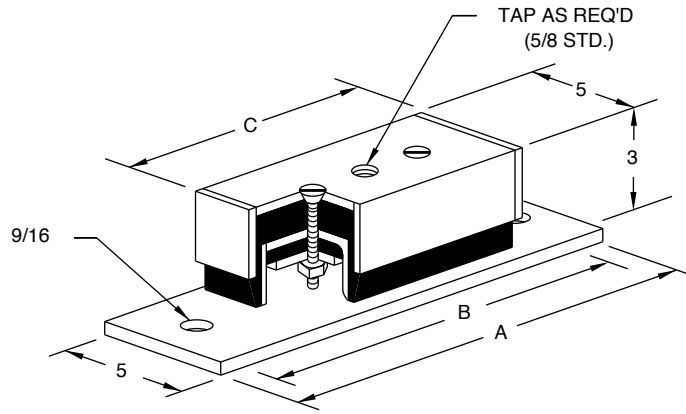


# NEOPRENE MOUNTS FOR HEAVY DUTY APPLICATIONS



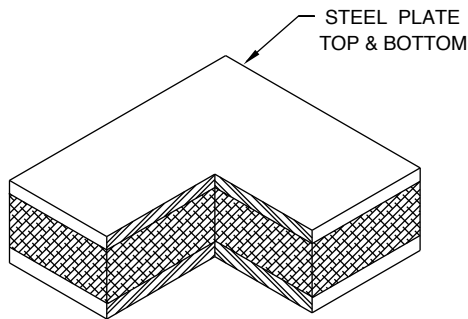
SM (Fig. 25)

Fig. No.	MODEL NUMBER	"A"	"B"	"C"	RATED LOAD	RATED DEFL.	SHIP. WGT.
25	SM-1	9	7 1/2	6	4000 #	.10"	12 #
	SM-2	11 1/2	10	9	6400 #		15 #

The "SM" mount is a completely steel enclosed unit employing the highest quality neoprene in a captive all directional mount design. This mount employs the "FP" pads designed by the Vibration Eliminator Company, Inc. for high load capacity with deflections that permit selections in the 7 through 15 cycle per second natural frequency range. This makes the "SM" mount ideal for shipboard use under main propulsion engines, diesel generators and related equipment.

In the industrial field the "SM" mount serves as an ideal isolator for use under punch presses, grinders, lathes, injection molding machines, etc. Because of its captive features, once attached to a machine it need not be removed when relocating the machinery.

The "SM" mount is also used to protect shipments in transit and upon arrival it serves as a vibration eliminator under equipment such as diesel generators.



FP (Fig. 26)

Fig. No.	MODEL NUMBER	PAD SIZE L x W x H	RATED LOAD	RATED DEFL.	SHIP. WGT.
26	FPA-1	4 x 4 x 1 3/8	2400 #	.10"	3.0 #
	FPA-2	6 x 6 x 1 3/8	5400 #		7.0 #
	FPA-3	8 x 8 x 1 3/8	9600 #		12.0 #
	2FPA-1	4 x 4 x 2 3/8	2400 #	.20"	4.5 #
	2FPA-2	6 x 6 x 2 3/8	5400 #		9.5 #
	2FPA-3	8 x 8 x 2 3/8	9600 #		18.0 #

"FP" isolators consist of the highest quality neoprene molded to specifications establishing shape factors which control the lead deflection characteristics for the mounts. The rubber is sandwiched between two steel plates.

"FP" mounts may be any desired dimensions and/or load capacity. Selection and distribution of the inserts should be made in cooperation with our engineering department to assure best results for each application. Some typical applications of "FP" mounts include the support of punch presses to 3000 ton capacity, centrifugal refrigeration compressors, building columns, diesel engine generators, pipe risers, injection molders and numerous others. Each case is given individual attention and recommendations are accompanied by drawings illustrating correct applications.